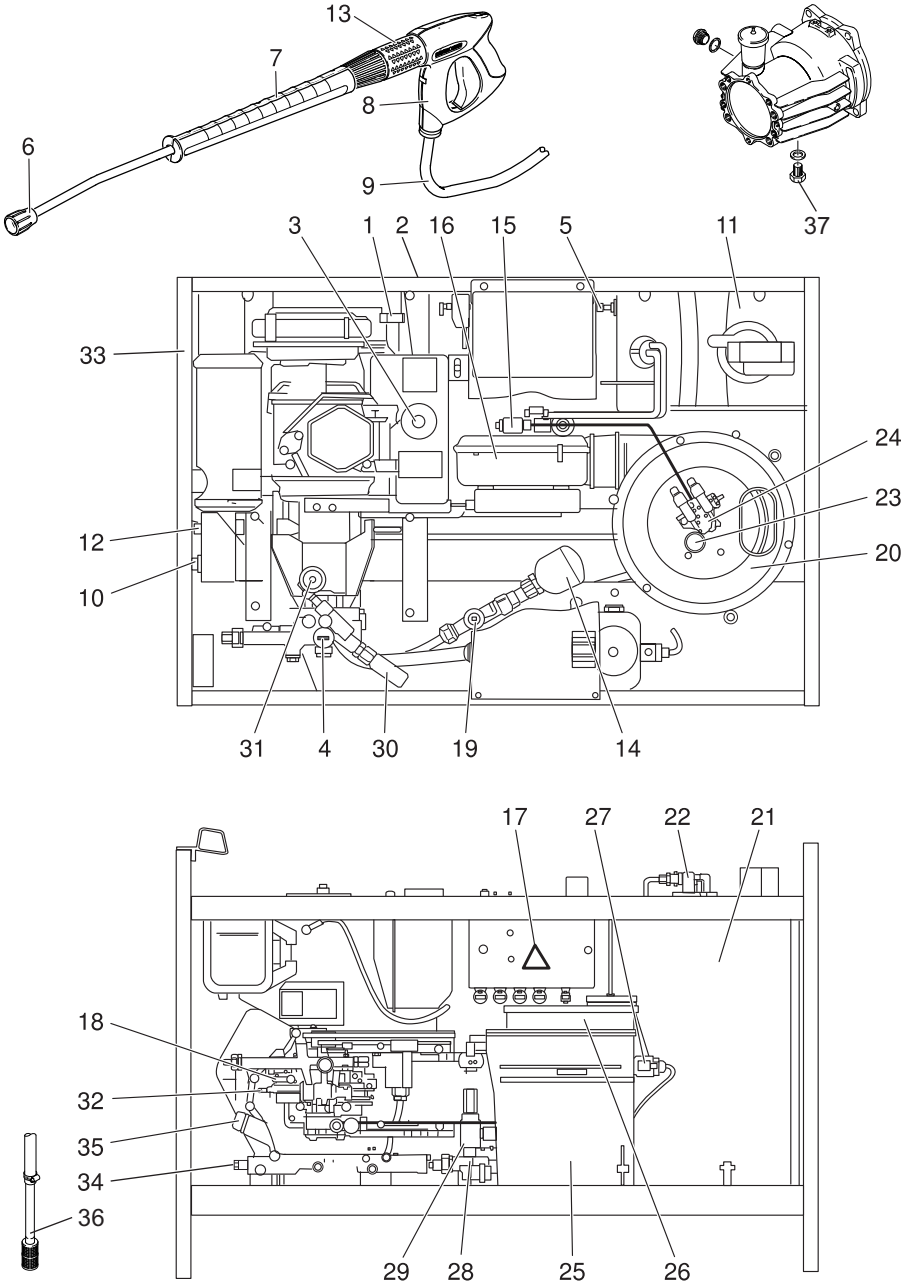
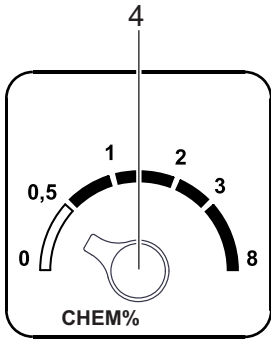
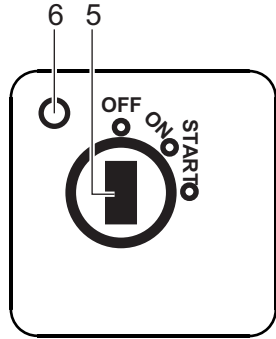
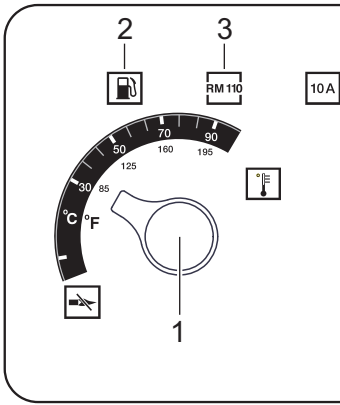


Register and win!
www.kärcher.com/register-and-win

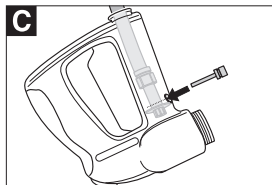
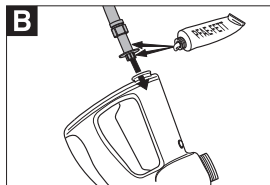
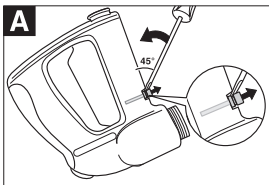
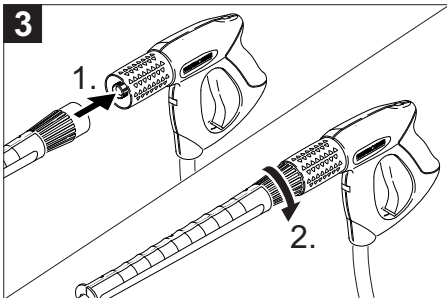


1**HDS 1000 DE**

2



3





Please read and comply with these original instructions prior to the initial operation of your appliance and store them for later use or subsequent owners.

- Before first start-up it is definitely necessary to read the operating instructions and safety indications Nr. 5.951-949.0!
- In case of transport damage inform vendor immediately
- Check the contents of the pack before unpacking.

Contents

Environmental protection . . .	EN . . . 1
Symbols in the operating instructions	EN . . . 1
Device elements	EN . . . 2
Symbols on the machine . . .	EN . . . 2
Proper use	EN . . . 2
Safety instructions	EN . . . 3
Safety Devices	EN . . . 3
Start up	EN . . . 4
Operation	EN . . . 6
Storage	EN . . . 8
Transport	EN . . . 9
Maintenance and care	EN . . . 9
Troubleshooting	EN . . 10
Warranty	EN . . 12
Accessories and Spare Parts	EN . . 12
EC Declaration of Conformity	EN . . 12
Technical specifications . . .	EN . . 13

Environmental protection



The packaging material can be recycled. Please do not throw the packaging material into household waste; please send it for recycling.



Old appliances contain valuable materials that can be recycled; these should be sent for recycling. Batteries, oil, and similar substances must not enter the environment. Please dispose of your old appliances using appropriate collection systems.



Please dispose off the normal or rechargeable batteries in an environment-friendly manner. Batteries and accumulators contain substances that must not enter the environment. Please dispose them off using appropriate collection systems.

Please do not release engine oil, fuel oil, diesel and petrol into the environment. Protect the ground and dispose of used oil in an environmentally-clean manner.

Notes about the ingredients (REACH)

You will find current information about the ingredients at:

www.kaercher.com/REACH

Symbols in the operating instructions

Danger

Immediate danger that can cause severe injury or even death.

Warning

Possible hazardous situation that could lead to severe injury or even death.

Caution

Possible hazardous situation that could lead to mild injury to persons or damage to property.

Device elements

Figure 1

- 1 Device for manual start
- 2 Electric starter system
- 3 Fuel tank
- 4 Manometer
- 5 Battery
- 6 High pressure nozzle
- 7 Spray lance
- 8 Hand spray gun
- 9 High pressure hose
- 10 High pressure connection
- 11 Fuel tank
- 12 Connection for water supply with filter
- 13 Pressure/ quantity regulation
- 14 Pressure tank
- 15 Fuel pump with fuel filter
- 16 Burner blower
- 17 Electronics system
- 18 Oil sight glass
- 19 Safety valve
- 20 Burner cover
- 21 Continuous heater
- 22 Ignition plug
- 23 Burner looking glass
- 24 Nozzle holder
- 25 Float tank
- 26 Softener container
- 27 Solenoid valve
- 28 Water shortage safeguard
- 29 Sieve in the water shortage safeguard
- 30 Pressure switch
- 31 Oil filling container
- 32 High-pressure pump
- 33 Nameplate
- 34 Oil drain screw (engine)
- 35 Oil dip (engine)
- 36 Detergent suction hose with filter
- 37 Oil drain screw (pump)

Operating field

Figure 2

- 1 Power switch
- 2 Fuel indicator lamp
- 3 Liquid softner indicator lamp
- 4 Dosage valve for detergent
- 5 Key switch (electric starter system)
- 6 Indicator lamp "Ignition ON"

Symbols on the machine



High-pressure jets can be dangerous if improperly used. The jet may not be directed at persons, animals, live electrical equipment or at the appliance itself.



Risk of poisoning! Do not breathe in the exhaust fumes.



Risk of burns on account of hot surfaces!

Proper use

Note: Applicable only for Germany: The appliance is meant only for mobile (non-stationary) operations.

- The appliance is used especially at locations where there is no electrical connection and it is necessary to work with hot water.
- Cleaning of: Machines, Vehicles, Structures, Tools, Facades, Terraces, Gardening tools, etc.

⚠ Danger

Risk of injury! Follow the respective safety regulations when operating at gas stations or other dangerous areas.

Please do not let mineral oil contaminated waste water reach soil, water or the sewage system. Perform engine cleaning and bottom cleaning therefore only on specified places with an oil trap.

Safety instructions

⚠ Danger

- Do not use high pressure cleaners when there has been an oil spill; move the appliance to another spot and avoid any sort of spark formation.
- Do not store, spill or use fuel in the vicinity of open flames or appliances such as ovens, boilers, water heaters, etc. that have an ignition flame or can generate sparks.
- Keep even mildly inflammable objects and materials away from the silencer (at least 2 m).
- Do not start the engine without the silencer; check, clean and replace, if required, the silencer at regular intervals.
- Do not use the engine in forest, bushes or grassy areas without fitting a spark receiver at the exhaust.
- Except for setting jobs, do not run the engine when the air filter is removed or there is no cover over the suction support.
- Do not make any adjustments to the regulator springs, regulator bars or other parts that can bring forth an increase in the engine speed.
- Risk of burns! Do not touch hot silencers, cylinders or radiator ribs.
- Do not put hands or feet close to moving or rotating parts.
- Risk of poisoning! The appliance should not be operated in closed rooms.

General

- Please follow the national rules and regulations for fuel spray jets of the respective country.
- Please follow the national rules and regulations for accident prevention of the respective country. Fuel spray jets must be tested regularly and the results of these tests must be documented in writing.

- The heating appliance of the machine is an ignition plant. All national laws and regulations about heating systems must also be followed.

High pressure hose

⚠ Danger

Risk of injury!

- Only use original high-pressure hoses.
- The high-pressure hose and the injection system must be suitable for the maximum operating pressure given in the Technical Data.
- Avoid contact with chemicals.
- Check the high-pressure hose daily. Do not use hoses with kinks. Stop using the high-pressure hose if the external wire layer is visible.
- Do not use the high-pressure hose anymore if the winding is damaged.
- Lay the high-pressure hoses in such a way that no vehicle can drive over it.
- Do not use high-pressure hoses that have been driven over, kinked, pressed or bent even if there is no externally visible damage.
- Store the high-pressure hoses in such a way that they are not subject to any mechanical load.

Safety Devices

Safety devices serve for the protection of the user and must not be put out of operation or bypassed with respect to their function.

Water shortage safeguard

The safety mechanism against lack of water prevents the heater from over-heating when there is no water. The burner operates only when there is adequate water supply.

Overflow valve

- If the hand spray gun is closed, the overflow valve opens and the high pressure pump diverts the water back to the pump suction side. Thus the permissible working pressure is not exceeded.
- The overflow valve is set by the manufacturer and sealed. Setting only by customer service.

Safety valve

- The safety valve opens when the overflow valve is defective.
- The safety valve is set by the manufacturer and sealed. Setting only by customer service.

Pressure switch

The pressure switch switches off the burner when the working pressure falls below the minimum value and switches it on again when it is exceeded.

Start up

⚠ Warning

Risk of injury! Device, tubes, high pressure hose and connections must be in faultless condition. Otherwise, the appliance must not be used.

Check oil level of the high pressure pump

Caution

In case of lacteous oil inform Kärcher customer service immediately

- ➔ Check oil level of the high pressure pump at the oil sight glass.

Do not operate the appliance if the oil level has fallen below "MIN".

- ➔ Add oil if required (see technical specifications).

Motor

Follow the instructions given in the section "Safety Notes"!

- ➔ Read the operating instructions of the engine manufacturer before start-up and follow the safety instructions carefully.
 - ➔ Check air filter.
 - ➔ Check oil level of the engine.
- Do not operate the appliance if the oil level has fallen below "MIN".
- ➔ If required, top up oil carefully.
 - ➔ Fill fuel tank with diesel.

Refill fuel

Caution

Risk of damage to the fuel pump on account of dry running. Fill up the fuel tank even during cold water operations to such a level that the indicator lamp for fuel goes off.

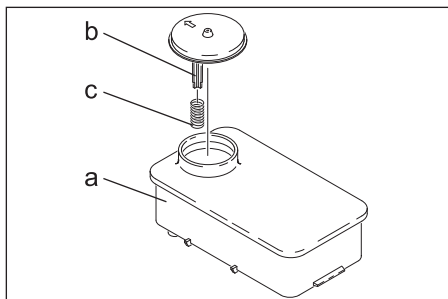
⚠ Danger

Risk of explosion! Only refill diesel oil or light fuel oil. Unsuitable fuels, e.g. petrol, are not to be used.

- ➔ Refill fuel.
- ➔ Close tank lock.
- ➔ Wipe off spilled fuel.

Refill liquid softener

Note: A sample bundle of liquid softener is included in the delivery.



- ➔ Remove spring (c) from the lid support (b) of the softener tank (a).
- ➔ Fill the tank with Kaercher softener liquid RM 110 (Order no. 2.780-001).

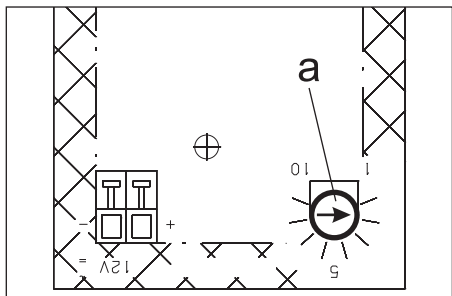
- The liquid softener prevents the calcification of the heating spiral while operating with calciferous tap water. It is dosed into the supply drop by drop.
- The metering is set to medium water rigidity by the manufacturer.

Adjust dosing of liquid softener

⚠ Danger

Risk of electrical voltage! Setting may only be done by an electrician.

- ➔ Determining the hardness of tap water:
 - through the public water supply works,
 - using a hardness tester (order no. 6.768-004)
- ➔ Open the electrical box.



- ➔ Set the speed potentiometer (a) according to the water hardness. You can refer to the correct setting in the table.

Example:










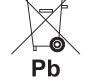
For a water hardness of 15 °dH, set 7 on the value scale of the speed potentiometer.

Water hardness (°dH)	Scale on the speed potentiometer
5	10
10	8
15	7
20	6,5
25	6
30	5,5

Battery

Safety notes regarding the battery

Please observe the following warning notes when handling batteries:

	<i>Observe the notes on the battery and in the operating instructions!</i>
	<i>Wear an eye shield!</i>
	<i>Keep away children from acid and batteries!</i>
	<i>Risk of explosion!</i>
	<i>Fire, sparks, open light, and smoking not allowed!</i>
	<i>Danger of causticization!</i>
	<i>First aid!</i>
	<i>Warning note!</i>
	<i>Disposal!</i>
	<i>Do not throw the battery in the dustbin!</i>

⚠ Danger

Risk of explosion! Do not put tools or similar on the battery, i.e. on the terminal poles and cell connectors.

⚠ Danger

Risk of injury! Ensure that wounds never come into contact with lead. Always clean your hands after having worked with batteries.

Charging battery

⚠ Danger

Risk of injury! Comply with safety regulations on the handling of batteries. Observe the directions provided by the manufacturer of the charger.

- ➔ Disconnect battery.
- ➔ Connect positive terminal cable from the charger to the positive pole connection on the battery.
- ➔ Connect negative terminal cable from the charger to the negative pole connection on the battery.
- ➔ Plug in mains connector and switch on charger.
- ➔ Charge battery using lowest possible level of charging current.

Check fluid level in the battery and adjust if required

Caution

Regularly check the fluid level in acid-filled batteries.

- ➔ Unscrew all cell caps.
- ➔ Where fluid level is too low, top up cells to the mark provided with distilled water.
- ➔ Charge battery.
- ➔ Screw in cell caps.

Install the hand-spray gun, the jet pipe, the nozzle and the high pressure hose

Figure 3

- ➔ Connect ray tube with hand spray gun
- ➔ Tighten the screw connection of the spray lance finger tight.
- ➔ Insert high pressure nozzle into covering nut

- ➔ Install covering nut and tighten firmly
- ➔ Connect the high pressure hose to the high pressure connection point of the machine.

Installing spare high pressure hose

Figures A-C

Water connection

For connection values refer to technical specifications

- ➔ Connect the supply hose (minimum length 7.5 m, minimum diameter 3/4") to the water connection point of the machine and at the water supply point (for e.g. a tap).

Note: The supply hose is not included.

Suck in water from vessel

- When fitted with the appropriate accessories, this high-pressure cleaner can draw in surface water, e.g. from water butts or ponds.
- Suction height max. 1m.

⚠ Danger

Never suck in water from a drinking water container. Never suck in liquids which contain solvents like lacquer thinner, petrol, oil or unfiltered water. The sealings within the device are not solvent resistant. The spray mist of solvents is highly inflammable, explosive and poisonous.

- ➔ Connect suction hose (minimum diameter 3/4") with filter (accessory) to the water connection point.
- ➔ Set dosing value for detergent to "0".

Operation

⚠ Danger

*Risk of explosion!
Do not spray flammable liquids.*

⚠ Danger

Risk of injury! Never use the appliance without the spray lance attached. Check and ensure proper fitting of the spray lance prior to each use. The screw connection of the spray lance must be fingertight.

⚠ Danger

- Place the appliance on firm surface.
- The high pressure cleaner must not be used by children. (Risk of accident on account of improper use of the appliance).
- The high pressure spray generates high levels of noise when the appliance is in use. Risk of hearing impairment. Always use proper ear-protection aids while working with the appliance.
- The water jet coming out of the high pressure nozzle causes the gun to recoil. Further, an angular spray pipe can cause additional torque. Hence hold the spray pipe and gun firmly.
- Never direct the water jet on to persons, animals, the appliance itself or electrical components.
- Vehicle tyres/ tyre valves may be cleaned only with a minimum spray distance of 30 cm. Otherwise, the high pressure spray can cause damage to the vehicle tyre/ tyre valve. The discolouring of the tyre is the first sign of damage. Damaged vehicle tyres are a source of danger.
- Do not spray materials contains asbestos or other health-hazardous substances.
- The operator must wear proper safety gear to be protected against the water sprays.
- Pay attention to ensure that all screws of all connecting hoses are tightened properly.
- The lever of the hand spray gun must not be locked during the operation.

Replace the nozzle

⚠ Danger

Switch the appliance off prior to replacing nozzle and activate hand spray gun until device is pressureless.

Cleaning

- Set pressure/temperature and detergent concentration according to the surface to be cleaned.

Note: To prevent damage due to too much pressure, always position high pressure ray first from a greater distance towards object to be cleaned.

Working with the high pressure nozzle

The spray angle is essential for the effectiveness of the high pressure ray. Normally work is performed with a 25° flat ray nozzle (included).

- Recommended nozzles are deliverable as accessories

- For strong contaminations

0° full ray - nozzle

- For sensitive surfaces and light contaminations

40° flat ray - nozzle

- For thick layered, persistent contaminations

Dirt grinder

- Nozzle with adjustable spray angle, for adaption to different cleaning tasks

Angle-Vario-Nozzle

Recommended cleaning method

- Loosen the dirt:
Spray detergent economically and let it work for 1...5 minutes but do not let it dry up.
- Remove the dirt:
Spray off loosened dirt with the high pressure jet.

Turning on the Appliance

- Open the water supply.
- Set the appliance switch to operation with cold/ hot water.
- Start the engine according to the operating instructions of the engine manufacturer.
- Press the lever on the hand spray gun.

Operating with cold water

- Set the appliance switch to "Burner off".

Operating with hot water

⚠ Danger

Scalding danger!

- Set the appliance switch to the desired working temperature (max. 98 °C). The burner is switched on.

Set working pressure and flow rate

- Set (+/-) the working pressure and quantity by turning the pressure/ quantity regulation mechanism at the hand spray gun.

⚠ Danger

When adjusting the pressure/quantity regulation, make sure that the screw connection of the spray lance does not become loose.

Operation with detergent

Caution

Unsuitable detergents can cause damage to the appliance and to the object to be cleaned.

- For considerate treatment of the environment use detergent economically.
- Observe the dosage and other instructions provided with these detergents.
- Use only those detergents approved by the manufacturer of the appliance.
- Kärcher detergents ensure smooth functioning. Please consult us or ask for our catalogue or our detergent information sheets.
- Suspend end of suction hose in a container filled with detergent.
- Set dosing value for detergent to the desired concentration.

Interrupting operation

- Release the lever on the trigger gun.

Note: When the lever of the hand spray gun is released, the engine continues to run at zero speed. The water thus circulates within the pump and gets heated. When the cylinder head at the pump has reached the maximum permissible temperature (80 °C), the safety thermostat at the cylinder head

switches off the engine. The appliance can be restarted after cooling down to below 50 °C.

Cooling can be hastened while using compressed water from the water supply pipes:

- Pull the lever of the hand spray gun for 2 - 3 minutes so that the circulating water cools down the cylinder head.
- Restart the engine.

After operation with detergent

- Set dosing value for detergent to "0".
- Open the hand spray gun and rinse the appliance for at least 1 minute.

Turn off the appliance

⚠ Danger

Danger of scalding by hot water. After operation with hot water, the device must be operated with open end handgun with cold water for at least two minutes.

After operating the water using saline water (sea water), open the hand spray gun and rinse the appliance for at least 2 - 3 minutes using tap water.

Caution

Never stop the motor under full load when the hand-spray gun is opened.

- Set the appliance switch to "Burner off".
- Release the lever on the trigger gun. Motor regulates to reach dry run speed.
- Set the appliance switch at the engine to OFF and close the fuel supply valve.
- Shut off water supply.
- Activate hand spray gun until device is pressure-less.
- Secure the hand spray gun using the safety catch so that it doesn't open accidentally.
- Remove the water inlet hose from the appliance.

Storage

Caution

Risk of injury and damage! Note the weight of the appliance in case of storage.

Transport

Caution

Risk of injury and damage! Observe the weight of the appliance when you transport it.

- When transporting in vehicles, secure the appliance according to the guidelines from slipping and tipping over.

Maintenance and care

You can sign with your dealer a contract for regular safety inspection or even sign a maintenance contract. Please take advice on this matter.

Danger

Risk of injury if the machine is left running in an unattended state. Remove the spark plug or disconnect the battery before working on the appliance.

Risk of burns! Do not touch hot silencers, cylinders or radiator ribs.

Maintenance intervals

Daily

- Check the high pressure hose for damages (risk of bursting). Please arrange for the immediate exchange of a damaged high-pressure hose.

Weekly

- Check oil level of the high pressure pump.

Caution

In case of lacteous oil inform Kärcher customer service immediately

Monthly

- Clean the sieve in the water connection.
- Clean sieve in the water shortage safe guard.
- Clean filter at the detergent suck hose.

After 500 operating hours, at least annually.

- Decalcify appliance.

Maintenance Works

High-pressure pump

Oil change:

- Ready a catch bin for appr. 1 Liter oil.
- Turn out the oil drain screw.
- Drain the oil in a collection basin.

Dispose of old oil ecologically or turn it in at a collection point.

- Screw in the oil drain screw.
- Slowly fill in new oil until the "MAX" marking on the oil container.

Note: Air pockets must be able to leak out.
For oil type refer to technical specifications.

Motor

Carry out maintenance tasks to the engine according to the specifications provided in the operating instructions of the engine manufacturer.

Decalcify appliance

The flow resistance is higher if there are deposits in the pipes; this increases the load on the motor.

Danger

Risk of explosion due to combustible gases! Smoking strictly prohibited during decalcification. Ensure proper ventilation.

Danger

Risk of burns injury on account of acid! Wear protective glasses and protective gloves.

■ Procedure:

According to statutory requirements, only tested and approved boiler decrusting agents may be used.

- RM 100 (Order No. 6.287-008) dissolves chalk and simple compounds of chalk and detergents residues.
- RM 101 (Order No. 6.287-013) dissolves the deposits that cannot be dissolved using RM 100.
- Fill a 20 litre container with 15 l water.
- Add one litre of boiler decrusting agent.

- Connect the water hose directly to the pump and hang in the other free end into the container.
- Insert the connected spray pipe without nozzle into the container.
- Start the engine according to the operating instructions of the engine manufacturer.
- Open the hand-spray gun and do not close it during the decalcification process.
- Set the appliance switch to a working temperature of 40 °C.
- Let the appliance run till the working temperature is reached.
- Switch off the appliance and let it stand for 20 minutes. The hand-spray gun must remain opened.
- Then pump out the machine until empty.

Note: As an anti-corrosion measure and for neutralising the acid residue, we recommend that you finally pump an alkaline solution through the machine (for e.g. RM 81) via the detergent tank.

Frost protection

Caution

Risk of damage! Freezing water in the appliance can destroy parts of the appliance.

- Store the appliance in a heated room during winter or empty it. During longer breaks in operation, it is advisable to pump in anti-frost agents into the appliance.
- If it is not possible to store frost free, shut down device.
- Drain water:
 - Screw off water supply hose and high pressure hose.
 - Screw off supply hose at boiler bottom and drain heating spiral empty.
 - Operate device for max. 1 minute until the pump and conduits are empty.
- Flush appliance with anti-freeze agent:

Note: Observe handling instructions of the anti-freeze agent manufacturer.

- Fill anti-freeze agent of the trade into swimmer container.
- Switch on appliance (without heater) till the appliance has been completely rinsed.

A certain corrosion protection is achieved with this as well.

Troubleshooting

⚠ Danger

Risk of injury if the machine is left running in an unattended state. Remove the spark plug or disconnect the battery before working on the appliance.

Risk of burns! Do not touch hot silencers, cylinders or radiator ribs.

Fuel indicator lamp glows

- Fuel tank empty
- Refill.

Indicator lamp liquid softener glows

- Liquid softener tank is empty, due to technical reasons a remainder stays in the tank.
- Refill.
- Electrodes in the tank are dirty
- Clean the electrodes.

Appliance is not running

Follow operating instructions of the engine manufacturer!

- Fuel tank empty.
- Refill.
- Safety thermostat at the high pressure pump has switched off the appliance after long period of cycle operation.
- Allow the appliance to cool down; then restart it. Refer section "Interrupting operation".

Device is not building up pressure

- Operating speed of the engine is too low
- Check operating speed of the engine (refer to technical data).
- Nozzle is blocked/ washed out
- Clean/ replace nozzle.

- Sieve in the water connection is dirty
- ➔ Clean sieve.
- Amount of water supply is too low.
- ➔ Check water supply level (refer to technical data).
- Pipe inlets to pump are leaky or blocked
- ➔ Check all inlet pipes to the pump.
- Air within the system

Vent pump:

- ➔ Set dosing value for detergent to "0".
- ➔ Open the water supply.
- ➔ Start the engine according to the operating instructions of the engine manufacturer.
- ➔ To deaerate the appliance, unscrew the nozzle and allow the appliance to run until the water exits in a bubble-free state.
- ➔ Switch off the appliance and fit the nozzle again.

High pressure side is leaky

- Pump leaky

Note: 3 drops/minute are allowed.

- ➔ With stronger leak, have device checked by customer service.

High pressure pump is vibrating

- Inlet pipes to the pump are leaky.
- ➔ Check all inlet pipes to the pump.
- Air within the system

Vent pump:

- ➔ Set dosing value for detergent to "0".
- ➔ Open the water supply.
- ➔ Start the engine according to the operating instructions of the engine manufacturer.
- ➔ To deaerate the appliance, unscrew the nozzle and allow the appliance to run until the water exits in a bubble-free state.
- ➔ Switch off the appliance and fit the nozzle again.

Device is not sucking in detergent

- Detergent suction hose with filter is leaky or blocked
- ➔ Check/ clean detergent suction hose with filter.
- Backflow valve in the connection of the detergent suction hose is jammed
- ➔ Clean/ replace backflow valve in the connection of the detergent suction hose.
- Detergent dosing valve is closed or leaky/ blocked
- ➔ Open or check/clean detergent dosing valve.

Overflow valve keeps switching on/off when the hand-spray gun is opened

- Nozzle is blocked
- ➔ Clean the nozzle.
- Appliance is decalcified
- ➔ Decalcify appliance.
- Sieve in the water shortage safe guard is dirty
- ➔ Clean sieve.
- Overflow valve is defective
- ➔ Replace overflow valve (Customer Service).

Burner does not start

- Fuel tank empty
- ➔ Refill.
- Water shortage
- ➔ Check water supply, check connections.
- ➔ Clean sieve in the water shortage safe guard.
- Fuel filter dirty
- ➔ Change fuel filter.
- No ignition spark
- ➔ If device is in use and no ignition spark can be seen through the viewing glass, have device checked by customer service.

Set temperature is not achieved while using hot water

- Working pressure/flow rate to high
- ➔ Reduce working pressure/ flow quantity on the hand spray gun.
- Sooty heating spiral
- ➔ Have device de-sooted by customer service.

Customer Service

If malfunction can not be fixed, the device must be checked by customer service.

Warranty

The warranty terms published by our competent sales company are applicable in each country. We will repair potential failures of the appliance within the warranty period free of charge, provided that such failure is caused by faulty material or defects in fabrication.

Accessories and Spare Parts

- Only use accessories and spare parts which have been approved by the manufacturer. The exclusive use of original accessories and original spare parts ensures that the appliance can be operated safely and trouble free.
- At the end of the operating instructions you will find a selected list of spare parts that are often required.
- For additional information about spare parts, please go to the Service section at www.kaercher.com.

EC Declaration of Conformity

We hereby declare that the machine described below complies with the relevant basic safety and health requirements of the EU Directives, both in its basic design and construction as well as in the version put into circulation by us. This declaration shall cease to be valid if the machine is modified without our prior approval.

Product: High pressure cleaner
Type: 1.811-xxx

Relevant EU Directives

2006/42/EC (+2009/127/EC)
2000/14/EC
2004/108/EC

Applied harmonized standards

EN 55012: 2007 + A1: 2009
EN 60335-1
EN 60335-2-79

Applied conformity evaluation method

2000/14/EC: Appendix V

Sound power level dB(A)

Measured: 105
Guaranteed: 107

5.957-091

The undersigned act on behalf and under the power of attorney of the company management.



H. Jenner
CEO



S. Reiser
Head of Approval

Authorised Documentation Representative
S. Reiser

Alfred Kärcher GmbH Co. KG
Alfred-Kärcher-Str. 28 - 40
71364 Winnenden (Germany)
Phone: +49 7195 14-0
Fax: +49 7195 14-2212

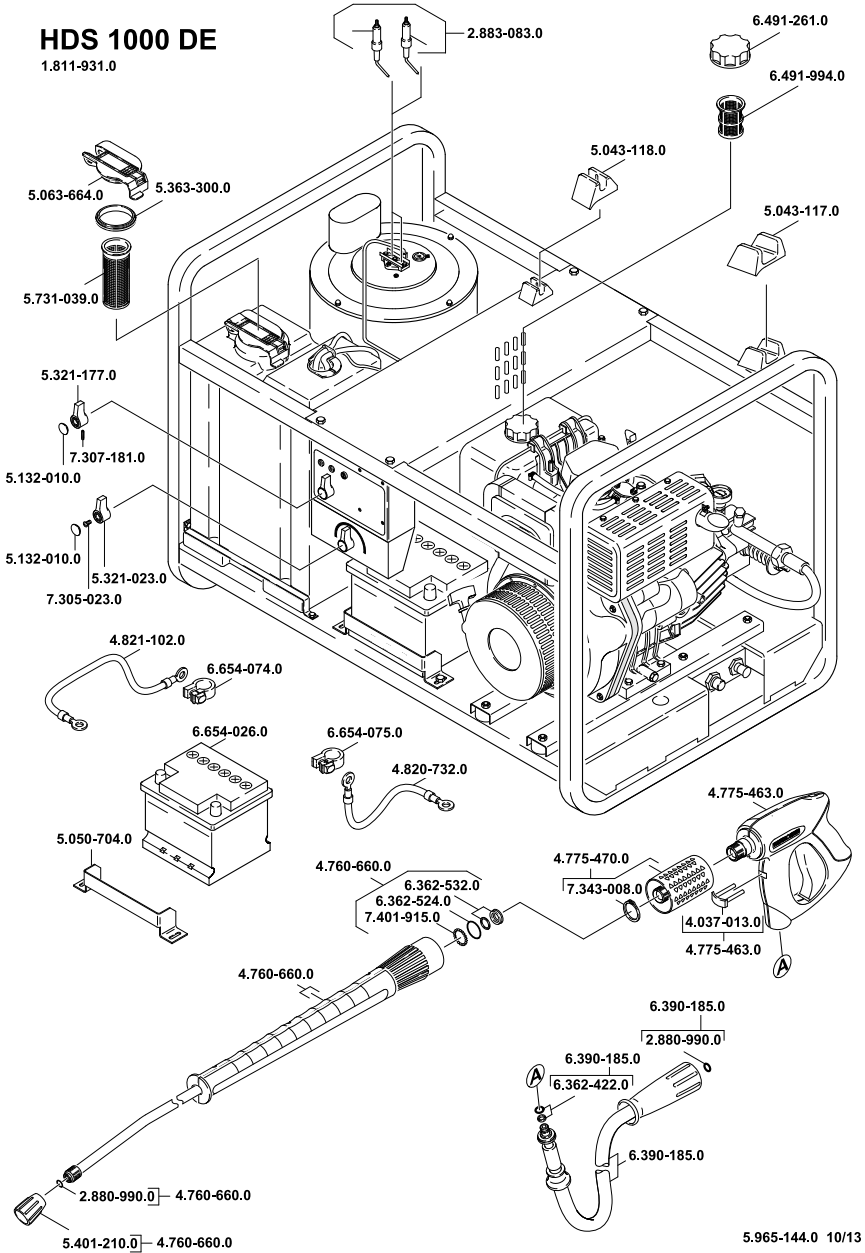
Winnenden, 2013/09/01

Technical specifications

		HDS 1000 DE *GB
Type of protection	--	IPX5
Motor		
Type	--	Yanmar L 100 N, 1 cylinder, 4-stroke
Maximum torque at 3600 rpm	kW (PS)	7,4 (10)
Specific consumption	g/kWh	250
Operating speed	1/min	3000-3100
Fuel tank	l	5,5
Fuel	--	Diesel
Water connection		
Max. feed temperature	°C	30
Min. feed volume	l/h (l/min)	1000 (16,7)
Max. feed pressure	MPa (bar)	0,6 (6)
Inlet hose	Order no.	4.440-207.0
Inlet hose length	m	7,5
Inlet hose diameter (min.)	Inch	3/4
Suck height from open container (20 °C)	m	1
Performance data		
Water flow rate	l/h (l/min)	450-870 (7,5-14,5)
Operating pressure of water (using standard nozzle)	MPa (bar)	4-18 (40-180)
Nozzle size	--	050
Max. excess operating pressure (safety valve)	MPa (bar)	23 (230)
Max. operating temperature of hot water	°C	98
Detergent suck in	l/h (l/min)	0-40 (0-0,7)
Burner performance	kW	59
Maximum consumption of heating oil	kg/h	5,56
Max. recoil force of hand spray gun	N	51
Values determined as per EN 60355-2-79		
Noise emission		
Sound pressure level L_{pA}	dB(A)	91
Uncertainty K_{pA}	dB(A)	2
Sound power level $L_{WA} + \text{Uncertainty } K_{WA}$	dB(A)	107
Hand-arm vibration value		
Hand spray gun	m/s^2	<2,5
Spray lance	m/s^2	<2,5
Uncertainty K	m/s^2	1
Fuel		
Fuel	--	Fuel oil EL or Diesel
Oil quantity - pump	l	0,35
Oil type - pipe	Engine oil 15W40	Order no. 6.288-050.0
Dimensions and weights		
Length x width x height	mm	1100 x 750 x 785
Typical operating weight	kg	197,0
Fuel tank	l	34

HDS 1000 DE

1.811-931.0





<http://www.kaercher.com/dealersearch>

